

The image shows the exterior entrance of a ryokan at night. A dark wooden building facade features a central double door with a black metal grid pattern. Above the door is a long, dark fabric awning. On the right side of the awning, the text 'FUGASTAY' and '京都五条' is printed in white. The ground is paved with dark grey tiles, and a yellow tactile paving strip leads to the entrance. A small, illuminated white pillar is visible in the bottom left corner.

FUGASTAY
京都五条

FUGASTAY – Kyoto Gojo

風雅 - 京都五条

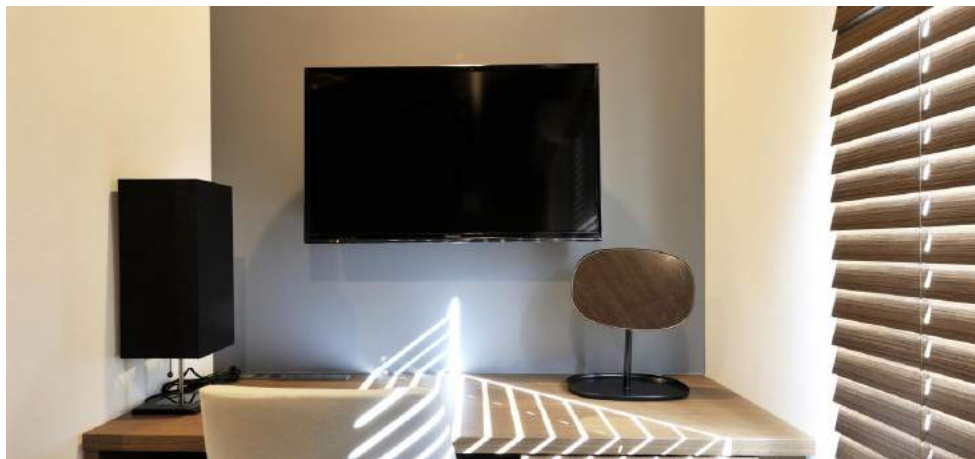
8 Room Ryokan for Sale

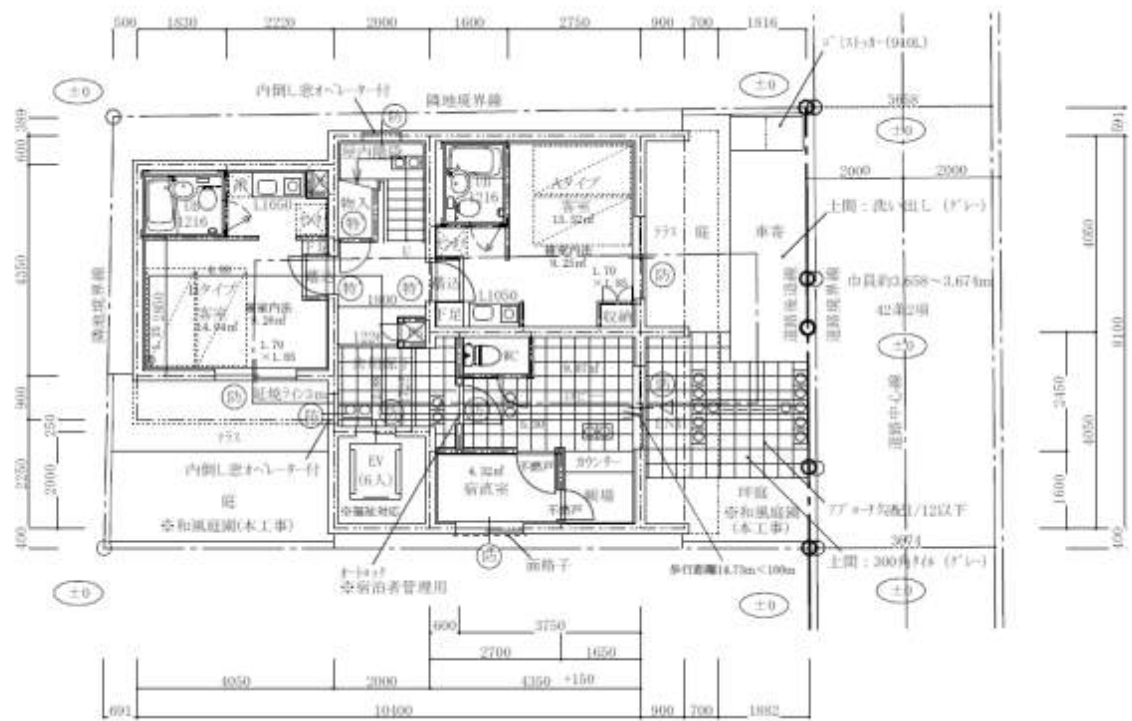


FUGASTAY KYOTO GOJO – 8 Room Ryokan for sale

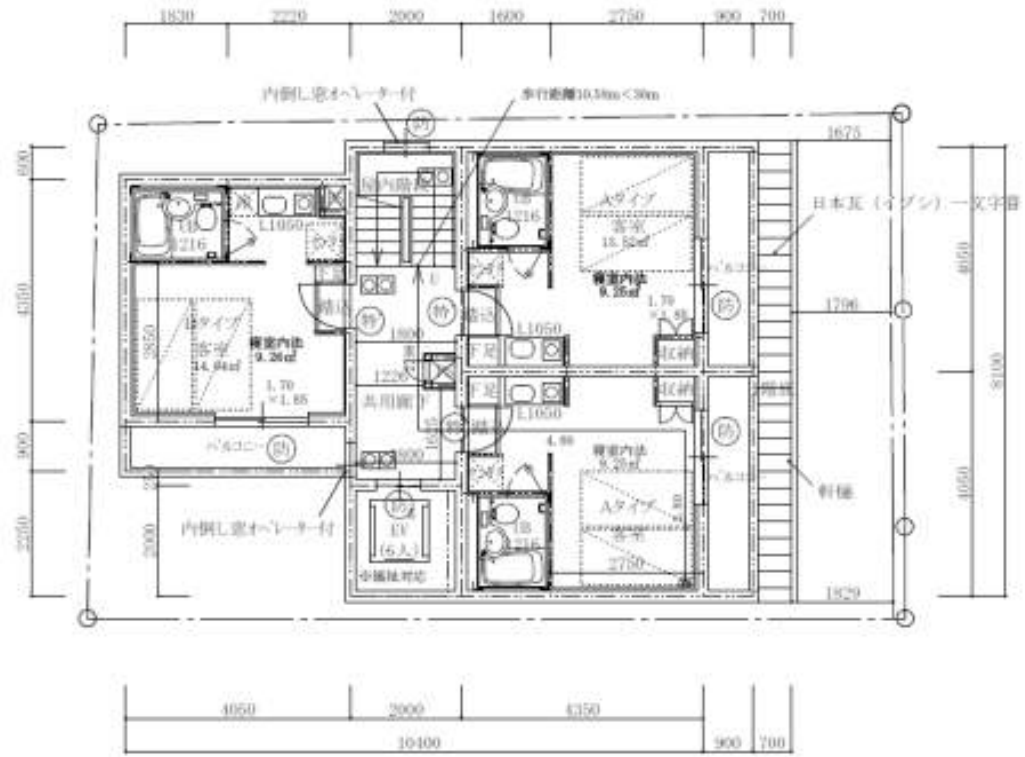
Price	JPY223,000,000 - indicates projected net cap rate of 5%
Land	131sqm
Gross Floor Area	207sqm
Description	8 twin room Ryokan, on 3 floors.
Notes	<ul style="list-style-type: none">• Located on the outer edge of Shijo Dori prime area and 5 minutes by foot to Tambaguchi station• Brand new, completed January 2018
Links	Booking.com: http://www.booking.com/Share-VGEtwZ
Higher resolution photos	https://drive.google.com/drive/folders/1MJ-lq_mBiZNBj9NIs7O5Y0JjKWaoKeYo







Ground Floor Layout



2nd and 3rd Floor Layout

